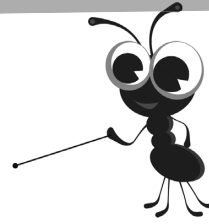


Name: _____ Date: _____

Points of view

Visualise and draw 3-D shapes from the top, from the front and from the side



You will need:

- coloured pencils
- ruler
- 1 cm square dot paper

The shapes below are made of cubes.
Follow these instructions for each shape.

- Use the code R (red), B (blue), G (green) and Y (yellow) to colour the 3-D shape.
- Draw the shape on the square dot paper as you would see it from the top, the front and the side. You might need to use the sheet of 1 cm square dot paper to draw all the shapes.
- Colour the three views.

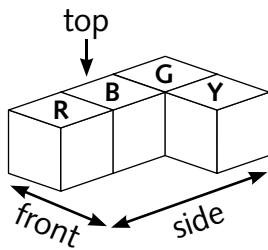
3-D shape

top view

front view

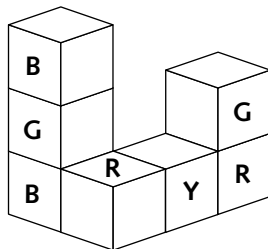
side view

Challenges
1,2,3



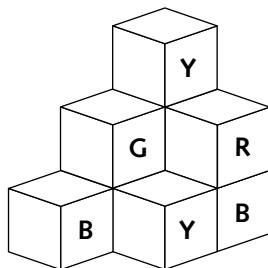
.
.
.
.

Challenges
2,3



.
.
.
.

Challenge
3



.
.
.
.



Discuss how different items around your home might appear when they are looked at from above, for example, TV set, toaster, table, saucepan, kettle. Make sketches of the top view of three items on the back of this sheet.