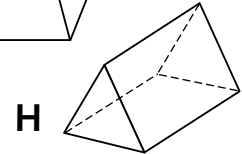
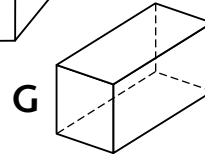
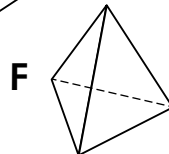
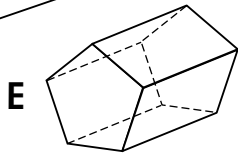
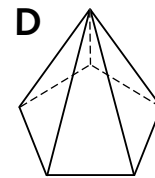
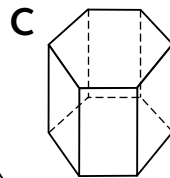
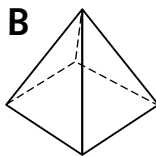
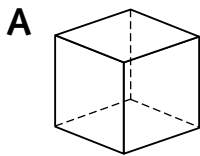
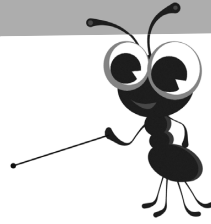


Name: _____ Date: _____

About 3-D shapes

Use properties to identify 3-D shapes



Challenges
1,2,3

Complete the table using the shapes above. Mark the property with a ✓ or a X.

Property	A	B	C	D	E	F	G	H
is a prism	✓							
has no right-angled faces	X							
has 8 vertices	✓							
has 3 edges at each vertex	✓							

Challenges
2,3

Find the five prisms in the table above and complete the table below for each prism.

Property	A				
Number of faces					
Number of edges of an end face					

Challenge
3

Can you find a relationship between the number of edges of an end face of a prism and the total number of faces of a prism? Write what you notice on the back of this sheet.



Take turns to ask and answer questions about the faces, edges and vertices of the shapes at the top of this sheet. Record three questions and their answers on the back of this sheet.