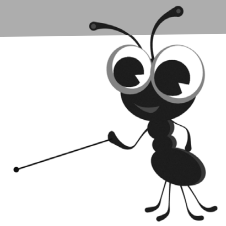


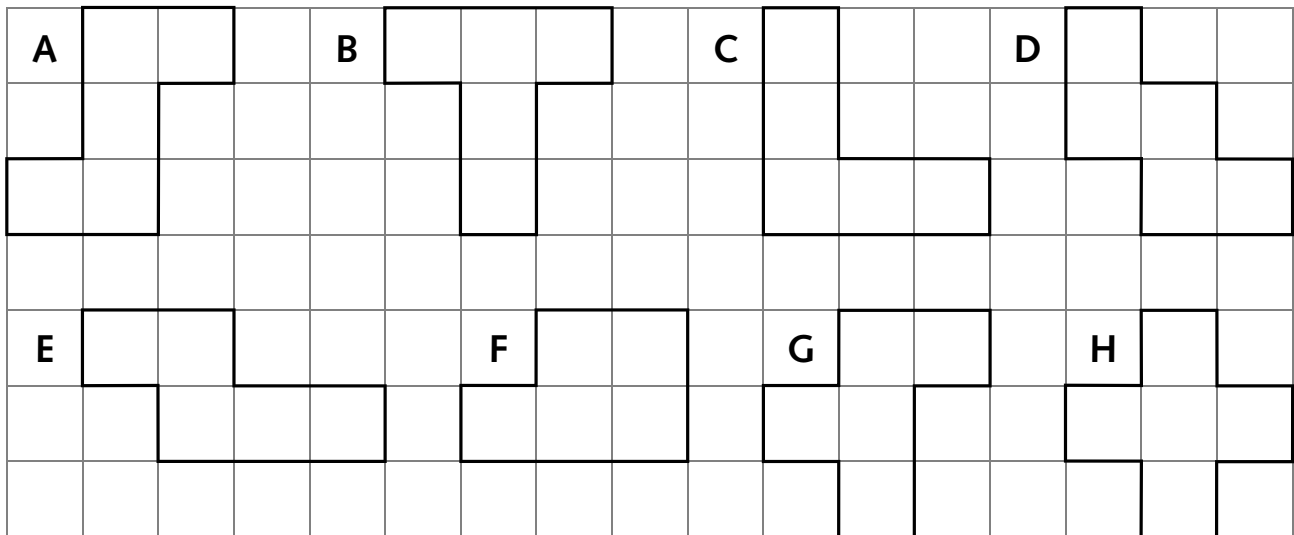
Name: _____ Date: _____

Puzzling pentominoes



Calculate the perimeter of shapes that can be split into rectangles

These shapes are made by joining five 1 cm squares edge to edge.



1 Work out the perimeter of each shape and complete the table.

Shape	A	B	C	D	E	F	G	H
Perimeter (cm)								

2 On the 1 cm square grid below draw three different shapes made with five squares. Record the perimeter in cm below each shape you draw.

You will need:
• ruler

