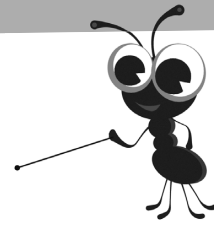


Name: _____ Date: _____

Visitors to the castle



Use information presented in a line graph to solve problems

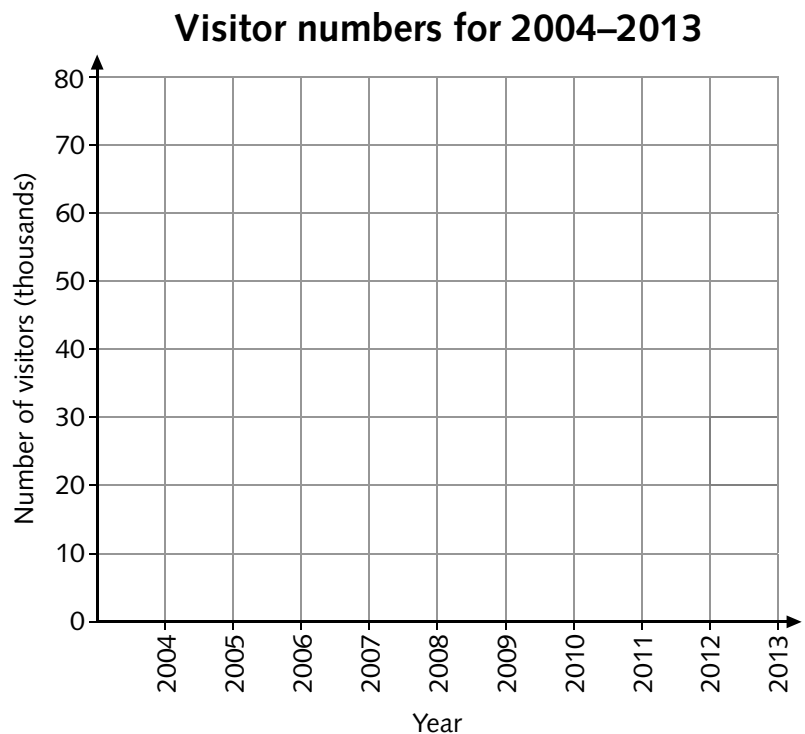
The table shows the approximate number of people who visited a castle during 2004 to 2013.

You will need:

- ruler

Year	2004	2005	2006	2007	2008	2009	2010	2011	2012	2013
Number of visitors (thousands)	30	40	45	50	55	60	60	75	70	80

- 1 Plot the points on the grid.
Then join the points with your ruler to make a line graph.



- 2 In which year did the number of visitors rise by 15 000?
- 3 Which years recorded the same number of visitors? and
- 4 In which year did the number of visitors fall?
- 5 How many more people visited the castle in 2013 than in 2008?
- 6 On the back of this sheet write two different statements about the information contained in the line graph.