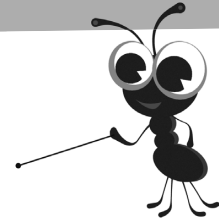


Name: _____ Date: _____

Travel times



Complete, read and interpret data in tables and timetables

- 1 The trains connecting Terminals A and B at the airport leave every 6 minutes.
Use this timing to complete the timetable for each train.

Terminal A	
Train	Leaves at
1	10:30
2	10:36
3	
4	
5	
6	

Terminal B	
Train	Leaves at
1	10:03
2	10:09
3	
4	
5	
6	

- 2 This is a timetable for flights between London and Glasgow.
The flight time is 1 hour and 15 minutes.

a Complete the timetable.

Depart London	07:05	09:00	10:55		15:30		19:15	
Arrive Glasgow		10:15		14:10		18:15		23:00

The 10:55 flight for Glasgow was delayed at London by 20 minutes.

b At what time did the flight leave London?

c What was its new arrival time in Glasgow?

d Mr Gibb's flight from Australia landed in London at 11:17. He was booked on the next flight to Glasgow. How long did he have, in hours and minutes, between landing in London and taking off for Glasgow?

 h min