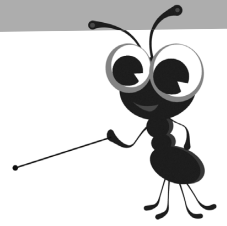


Name: \_\_\_\_\_ Date: \_\_\_\_\_

# Party time



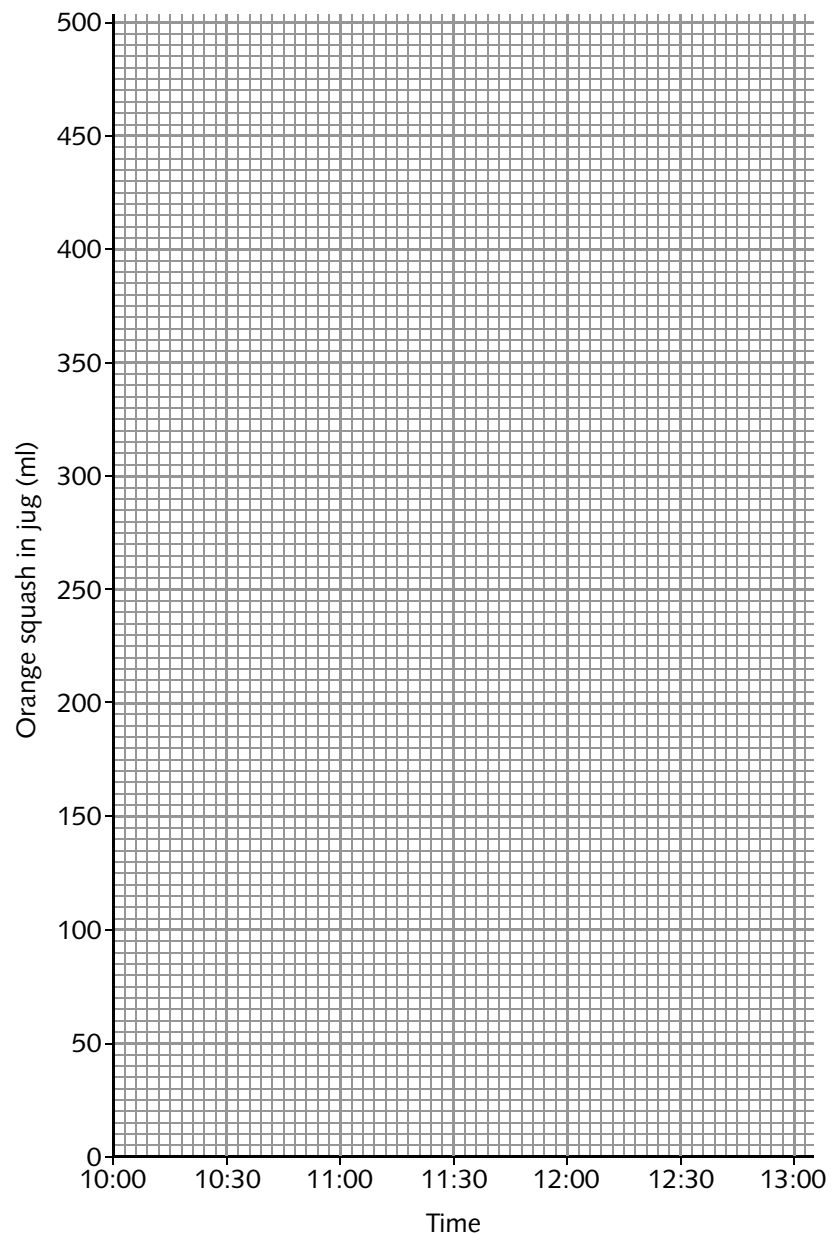
Use coordinates and scales to interpret information in time graphs

- 1 The table shows the amount of orange squash in the jug at Ethan's party at these times. Draw a line graph of the data.

**You will need:**  
• ruler

Time	Orange squash in jug (ml)
10:00	500
10:30	200
11:00	0
11:30	300
12:00	200
12:30	200
13:00	400

Orange squash at Ethan's party



- 2 Estimate the volume of squash at:

a 10:45

b 11:15

c 11:45

- 3 At which times did the jug hold about 300 ml of squash?

- 4 How much orange squash was poured from the jug between 10:00 a.m. and 1:00 p.m.?  ml

- 5 On the back of this sheet write two different statements about the information contained in the line graph.