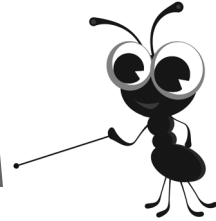


Name: _____ Date: _____

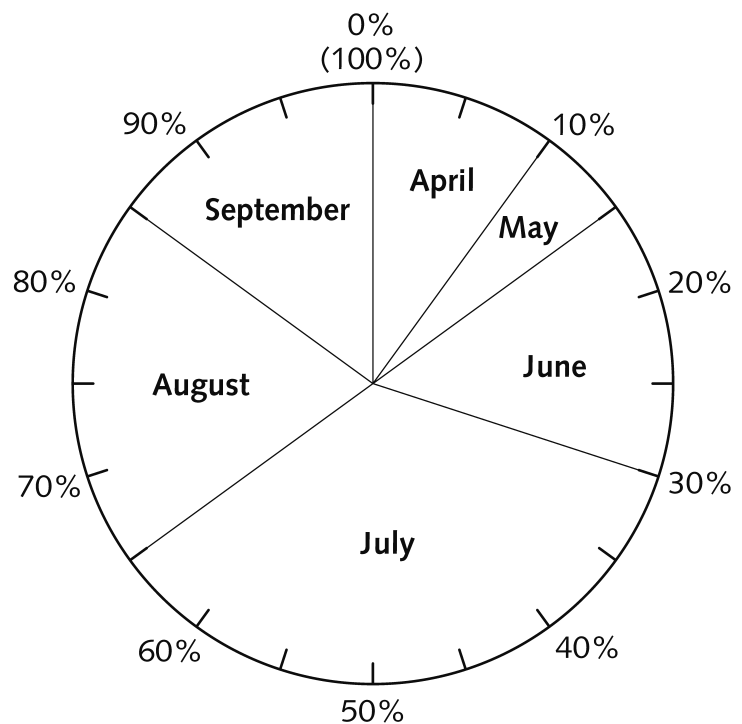
Driving lessons pie chart

Interpret and draw pie charts and use them to solve problems



The pie chart shows the driving lessons given by an instructor from April to September. Each sector in the pie chart represents 5%.

Driving lessons given



1 What percentage of driving lessons were given in:

a April %

b August %

c June %

2 If the instructor gave 90 driving lessons in June, how many lessons did he give in:

a August?

b May?

c September?

3 How many more driving lessons did he give in July than in June?

4 How many lessons altogether did the instructor give for the 6 months from April to September?

5 In which month did the instructor take time out for a holiday? _____

Give a reason for your answer.
