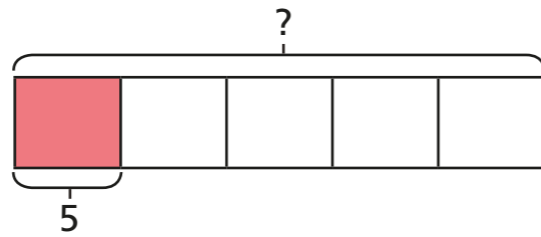


Calculate quantities

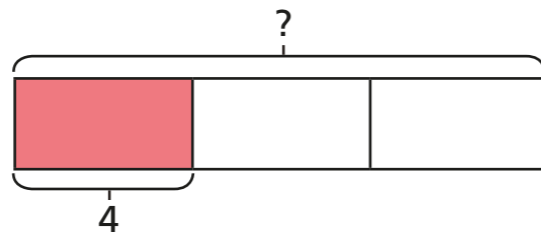
1 Match the calculations to the bar models.

Work out the missing quantities.

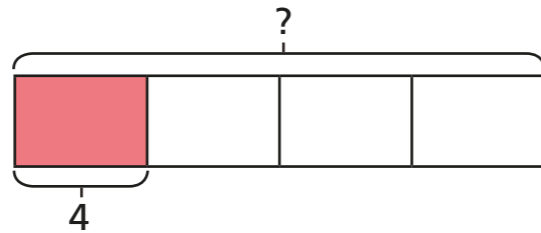
$$\frac{1}{4} \text{ of } \square = 5$$



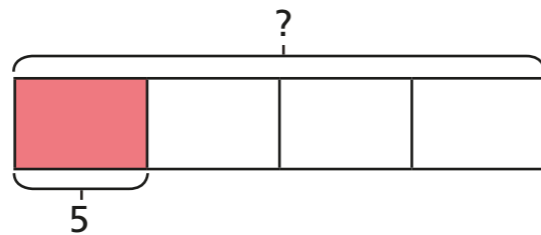
$$\frac{1}{4} \text{ of } \square = 4$$



$$\frac{1}{5} \text{ of } \square = 5$$



$$\frac{1}{3} \text{ of } \square = 4$$



2 Complete the sentences.

a) When one fifth is 1, the whole is

When one fifth is 10, the whole is

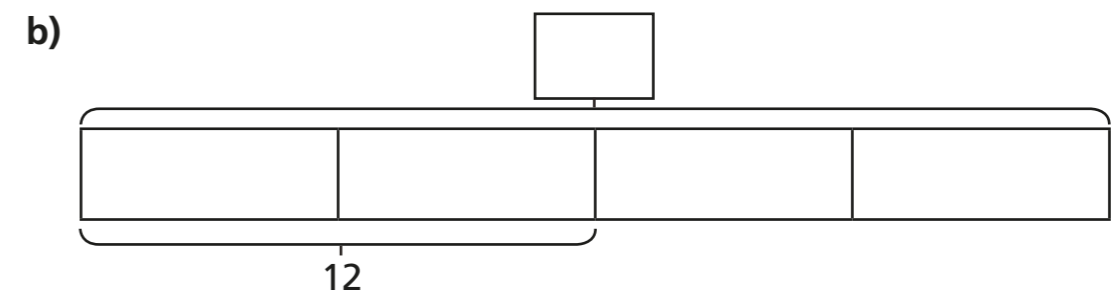
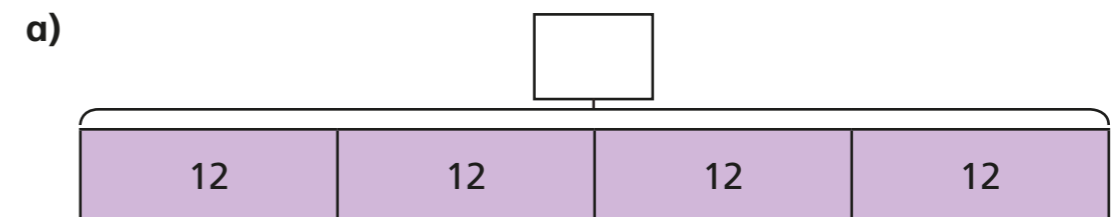
When one fifth is 20, the whole is

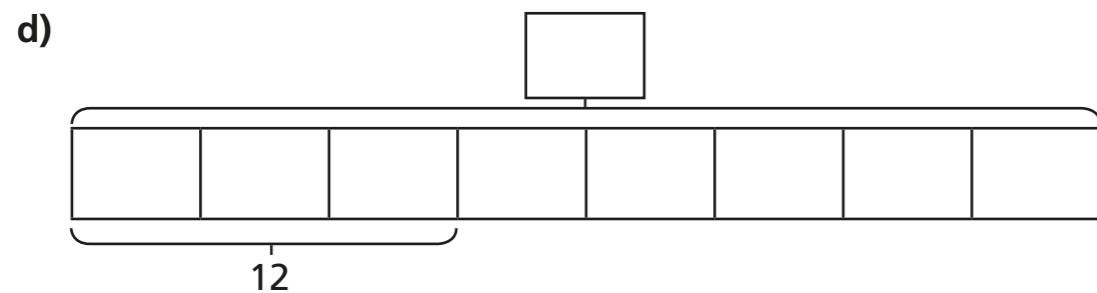
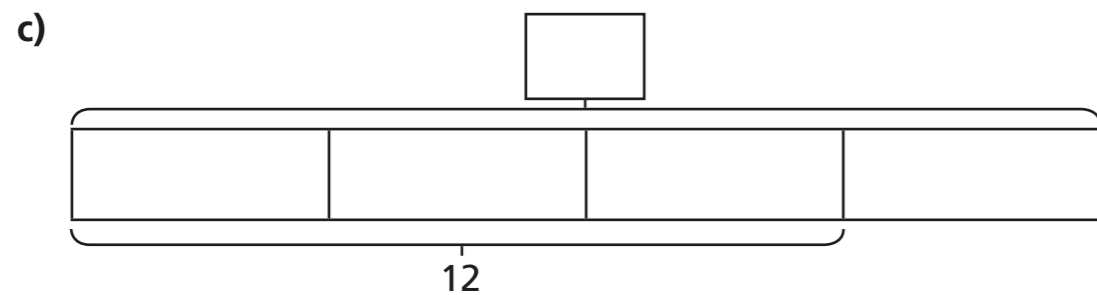
b) When $\frac{1}{7}$ is 2, the whole is

When $\frac{1}{7}$ is 4, the whole is

When $\frac{1}{7}$ is 8, the whole is

3 Complete the bar models and fill in the whole.





4 Complete the calculations.

a) $\frac{1}{2}$ of = 30

e) $\frac{3}{7}$ of = 15

b) $\frac{1}{2}$ of = 15

f) $\frac{5}{7}$ of = 15

c) $\frac{1}{4}$ of = 15

g) $\frac{5}{7}$ of = 35

d) $\frac{3}{4}$ of = 15

h) $\frac{7}{5}$ of = 35

5 Dora and Mo have a full bottle of juice.

Dora drinks $\frac{2}{5}$ of the juice.

Mo drinks $\frac{1}{5}$ of the juice.

There is 150 ml of juice left in the bottle.

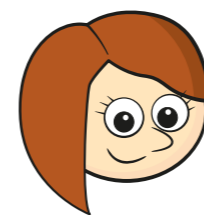
How much juice was in the full bottle?

ml

6 Rosie and Ron are collecting red and blue counters.

They have the same number of blue counters.

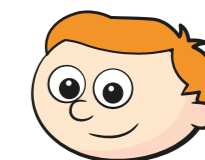
They have a different number of red counters.



Rosie

I have 18 counters altogether. $\frac{2}{3}$ are blue.

$\frac{3}{4}$ of my counters are blue.



Ron

a) How many counters does Ron have altogether?

b) How many red counters do they each have?

Rosie has red counters.

Ron has red counters.